



glentree

RENTALS

020 8209 1144

www.glentree.com



35a West Heath Place, Hodford Road, NW11

2 Bedrooms | Duplex Apartment | 2 Bathrooms | Private Terrace | 24 Hr Concierge | Available Now |

A large two bedroom, two bathroom, duplex apartment set over the upper ground and ground levels of this well-established and popular block on Hodford Road. The apartment comprises two double bedrooms, two bathrooms (one en-suite), open plan reception, private terrace/garden, one parking space. This development offers a private resident's gym, 24 hour concierge/security and use of the communal gardens.

The development is located centrally and within easy reach of Golders Green Tube Station, Temple Fortune and Hampstead High street.

Available now.

TWO DOUBLE BEDROOMS; TWO BATHROOMS (ONE EN-SUITE); LARGE OPEN PLAN RECEPTION ROOM; PRIVATE TERRACE/GARDEN; ONE SECURE UNDERGROUND PARKING SPACE; COMMUNAL GARDENS; RESIDENT'S GYM; 24 HOUR CONCIERGE/SECURITY

SOLE AGENT

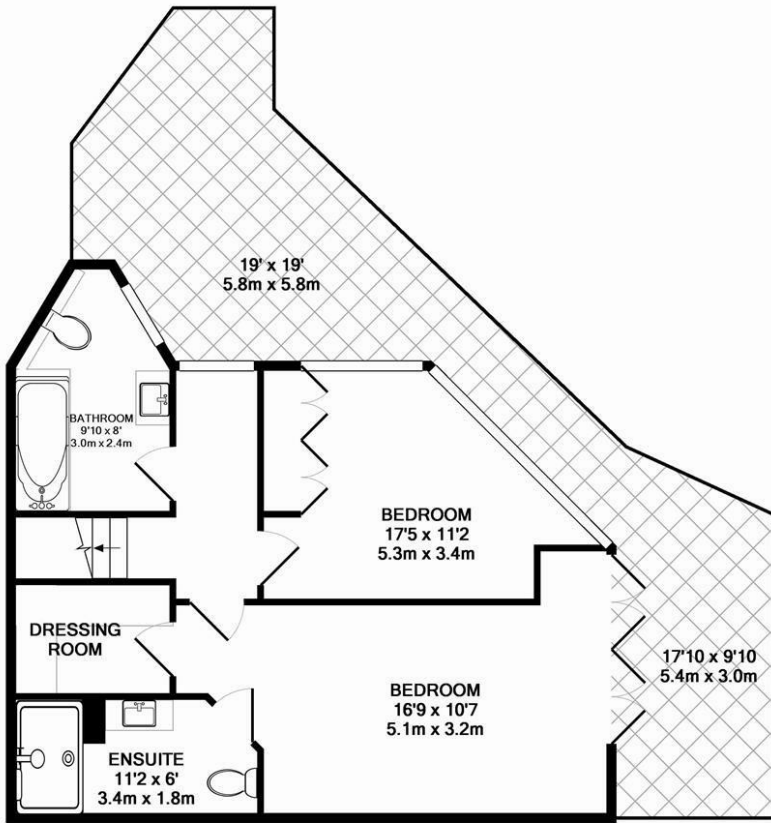
£800 Per Week



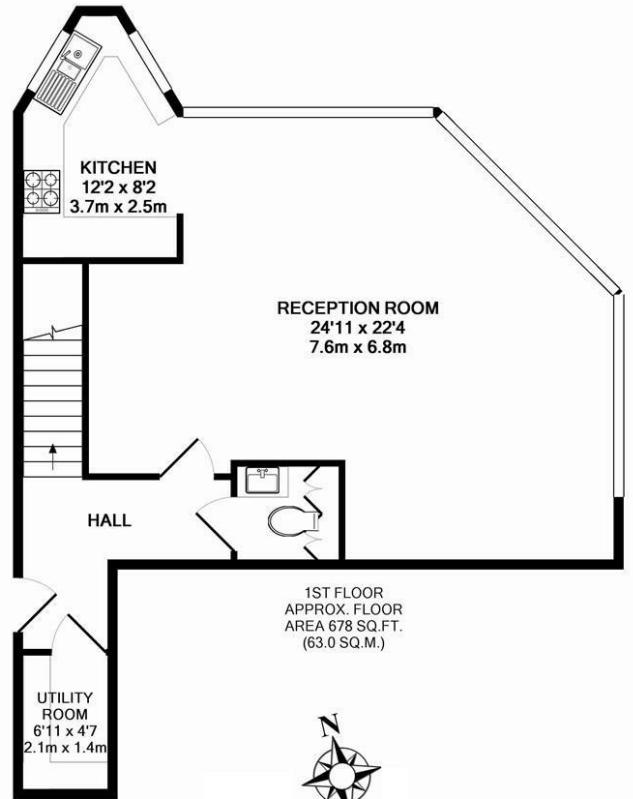
RENTALS 020 8209 1144
SALES 020 8458 7311
FAX 020 8209 0307

E rentals@glentree.com
E sales@glentree.com
W www.glentree.com

Glentree Estates Ltd
698 Finchley Road
London NW11 7NE



GROUND FLOOR
APPROX. FLOOR
AREA 625 SQ.FT.
(58.0 SQ.M.)



1ST FLOOR
APPROX. FLOOR
AREA 678 SQ.FT.
(63.0 SQ.M.)



TOTAL APPROX. FLOOR AREA 1303 SQ.FT. (121.0 SQ.M.)

Whilst every attempt has been made to ensure the accuracy of the floor plan contained here, measurements of doors, windows, rooms and any other items are approximate and no responsibility is taken for any error, omission, or mis-statement. This plan is for illustrative purposes only and should be used as such by any prospective purchaser. The services, systems and appliances shown have not been tested and no guarantee as to their operability or efficiency can be given
Made with Metropix ©2013

